

HEATSCOPE®

ORIGINAL MONTAGE- UND GEBRAUCHSANLEITUNG

Einbaukassette für den flächenbündigen Einbau
von HEATSCOPE® IR-Ambiente Heizstrahler

DE

ORIGINAL INSTALLATION AND INSTRUCTION MANUAL

Mounting Tray for surface-and flush-mounting
installation of HEATSCOPE® IR ambient heaters

EN



Einbaumaße / *build in measurements*

1. mit sichtbarem Rahmen / *with visible frame (surface-mounted)*

Heizstrahler-Modell / <i>heater model</i>	Ausschnittmaß / <i>cut out dimension</i>	
	Breite / <i>width</i>	Länge / <i>length</i>
HEATSCOPE ZERO MHS-ZE1800	225 + 5 mm	1 165 + 5 mm
HEATSCOPE ZERO MHS-ZE2400	225 + 5 mm	1 665 + 5 mm
HEATSCOPE ZERO MHS-ZE3200	225 + 5 mm	2 165 + 5 mm
HEATSCOPE SPOT MHS-SM/SP2800 HEATSCOPE VISION MHS-VT/VE1600	225 + 5 mm	915 + 5 mm
HEATSCOPE VISION MHS-VT/VE2200	225 + 5 mm	1 265 + 5 mm
HEATSCOPE VISION MHS-VT/VE3200	225 + 5 mm	1 765 + 5 mm

Heizstrahler-Modell / <i>heater model</i>	Einbaumaß inkl. Schürze / <i>installation dimension incl. frame</i>	
	Breite / <i>width</i>	Länge / <i>length</i>
HEATSCOPE ZERO MHS-ZE1800	270 + 5 mm	1 210 + 5 mm
HEATSCOPE ZERO MHS-ZE2400	270 + 5 mm	1 710 + 5 mm
HEATSCOPE ZERO MHS-ZE3200	270 + 5 mm	2 210 + 5 mm
HEATSCOPE SPOT MHS-SM/SP2800 HEATSCOPE VISION MHS-VT/VE1600	270 + 5 mm	970 + 5 mm
HEATSCOPE VISION MHS-VT/VE2200	270 + 5 mm	1 320 + 5 mm
HEATSCOPE VISION MHS-VT/VE3200	270 + 5 mm	1 820 + 5 mm

Heizstrahler-Modell / <i>heater model</i>	lichtes Innenmaß / <i>inside clearance</i>	
	Breite / <i>width</i>	Länge / <i>length</i>
HEATSCOPE ZERO MHS-ZE1800	210 - 5 mm	1 150 - 5 mm
HEATSCOPE ZERO MHS-ZE2400	210 - 5 mm	1 650 - 5 mm
HEATSCOPE ZERO MHS-ZE3200	210 - 5 mm	2 150 - 5 mm
HEATSCOPE SPOT MHS-SM/SP2800 HEATSCOPE VISION MHS-VT/VE1600	210 - 5 mm	925 - 5 mm
HEATSCOPE VISION MHS-VT/VE2200	210 - 5 mm	1 275 - 5 mm
HEATSCOPE VISION MHS-VT/VE3200	210 - 5 mm	1 775 - 5 mm

Einbaumaße / *build in measurements*

2. mit verdecktem Rahmen / *with covered frame (flush-mounted)*

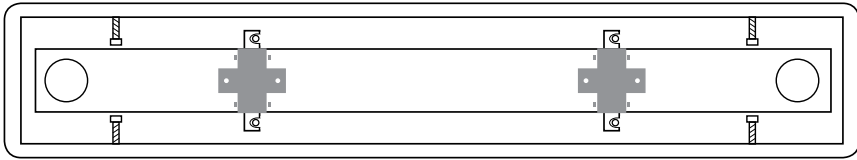
Heizstrahler-Modell / <i>heater model</i>	Ausschnittmaß / <i>cut out dimension</i>	
	Breite / <i>width</i>	Länge / <i>length</i>
HEATSCOPE ZERO MHS-ZE1800	215 + 5 mm	1 155 + 5 mm
HEATSCOPE ZERO MHS-ZE2400	215 + 5 mm	1 655 + 5 mm
HEATSCOPE ZERO MHS-ZE3200	215 + 5 mm	2 155 + 5 mm
HEATSCOPE SPOT MHS-SM/SP2800 HEATSCOPE VISION MHS-VT/VE1600	215 + 5 mm	915 + 5 mm
HEATSCOPE VISION MHS-VT/VE2200	215 + 5 mm	1 265 + 5 mm
HEATSCOPE VISION MHS-VT/VE3200	215 + 5 mm	1 765 + 5 mm

Heizstrahler-Modell / <i>heater model</i>	Einbaumaß inkl. Schürze / <i>installation dimension incl. frame</i>	
	Breite / <i>width</i>	Länge / <i>length</i>
HEATSCOPE ZERO MHS-ZE1800	270 + 5 mm	1 210 + 5 mm
HEATSCOPE ZERO MHS-ZE2400	270 + 5 mm	1 710 + 5 mm
HEATSCOPE ZERO MHS-ZE3200	270 + 5 mm	2 210 + 5 mm
HEATSCOPE SPOT MHS-SM/SP2800 HEATSCOPE VISION MHS-VT/VE1600	270 + 5 mm	970 + 5 mm
HEATSCOPE VISION MHS-VT/VE2200	270 + 5 mm	1 320 + 5 mm
HEATSCOPE VISION MHS-VT/VE3200	270 + 5 mm	1 820 + 5 mm

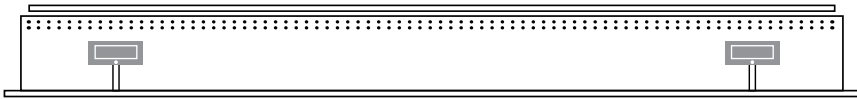
Heizstrahler-Modell / <i>heater model</i>	lichtes Innenmaß / <i>inside clearance</i>	
	Breite / <i>width</i>	Länge / <i>length</i>
HEATSCOPE ZERO MHS-ZE1800	210 - 5 mm	1 150 - 5 mm
HEATSCOPE ZERO MHS-ZE2400	210 - 5 mm	1 650 - 5 mm
HEATSCOPE ZERO MHS-ZE3200	210 - 5 mm	2 150 - 5 mm
HEATSCOPE SPOT MHS-SM/SP2800 HEATSCOPE VISION MHS-VT/VE1600	210 - 5 mm	910 - 5 mm
HEATSCOPE VISION MHS-VT/VE2200	210 - 5 mm	1 260 - 5 mm
HEATSCOPE VISION MHS-VT/VE3200	210 - 5 mm	1 760 - 5 mm

2. Ansichten der Einbaukassette / Views of the mounting tray

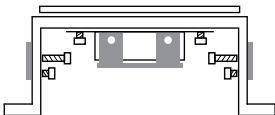
Aufsicht / top view



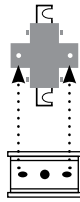
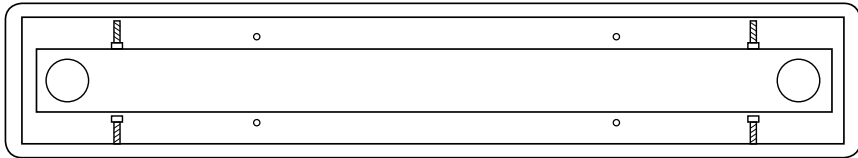
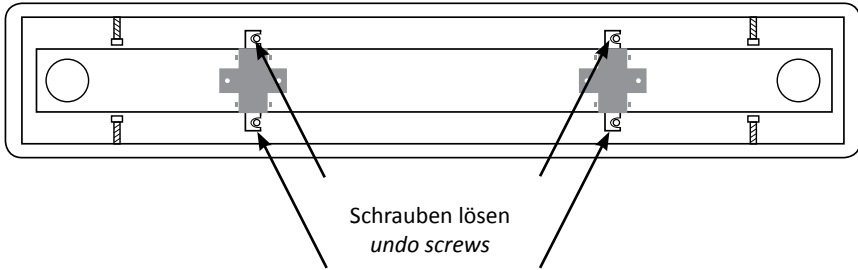
Seitenansicht / side view



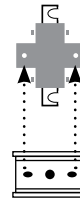
Querschnitt / cross section



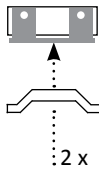
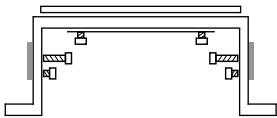
3. Vorbereitung zur Installation / *Preparing the installation*



Träger herausnehmen
put out racks



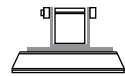
Montagehalter des Strahlers auf Träger montieren
attach mounting bracket of heater on the rack



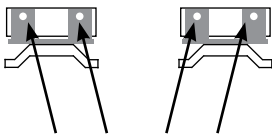
=



Frontansicht
front view



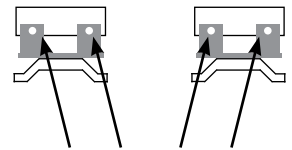
Seitenansicht
side view



Schrauben lösen
undo screws

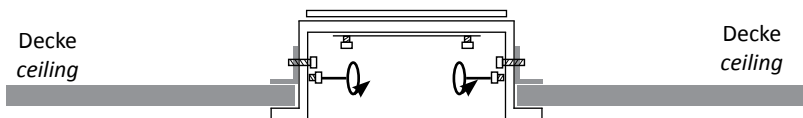
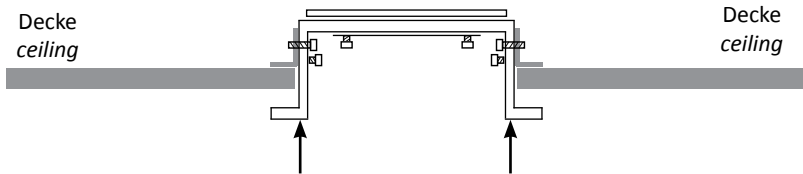
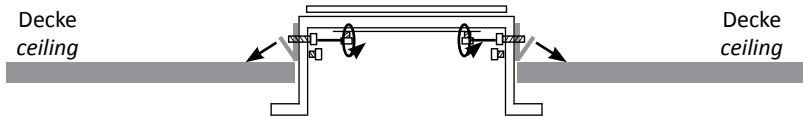
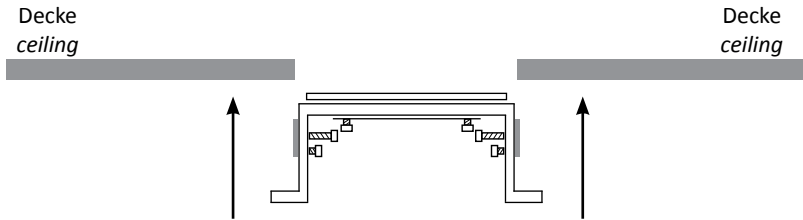


gewünschte Strahlerhöhe einstellen
adjust desired heater height



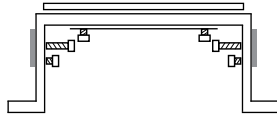
Schrauben festziehen
tighten screws

4. Anleitung Einbau mit sichtbarem Rahmen / Manual for installation with visible frame (surface-mounted)



5. Anleitung Einbau mit verdecktem Rahmen /
Manual for installation with hidden frame (flush-mounted)

verdeckte, tragende Decke
hidden „real“ ceiling



verdeckte, tragende Decke
hidden „real“ ceiling



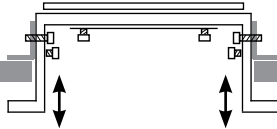
verdeckte, tragende Decke
hidden „real“ ceiling



verdeckte, tragende Decke
hidden „real“ ceiling



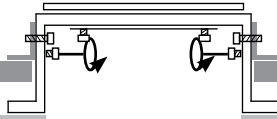
verdeckte, tragende Decke
hidden „real“ ceiling



verdeckte, tragende Decke
hidden „real“ ceiling



verdeckte, tragende Decke
hidden „real“ ceiling



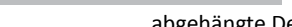
verdeckte, tragende Decke
hidden „real“ ceiling



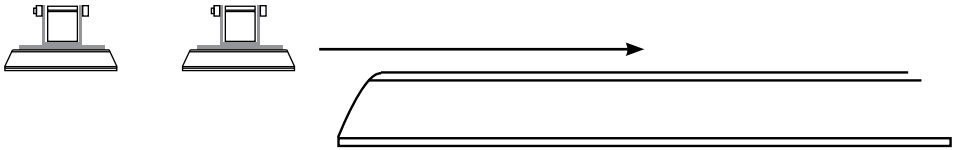
abgehängte Decke
drop „false“ ceiling



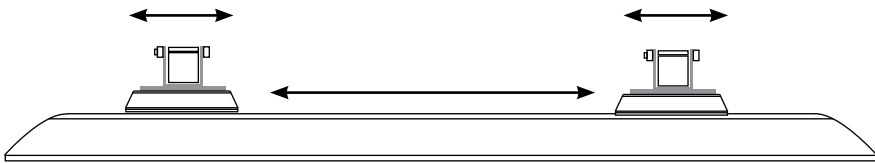
abgehängte Decke
drop „false“ ceiling



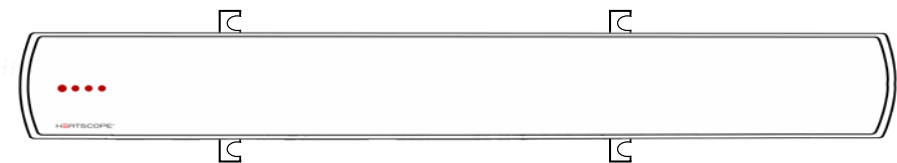
**6. Einsetzen des Heizstrahlers in die eingebaute Kassette /
Installation of heater in ceiling mounted mounting tray**



2 Montagehalter mit Träger in Führungsschiene auf Heizstrahler schieben
slide 2 mounting brackets incl. rack in the guidance rail of heater



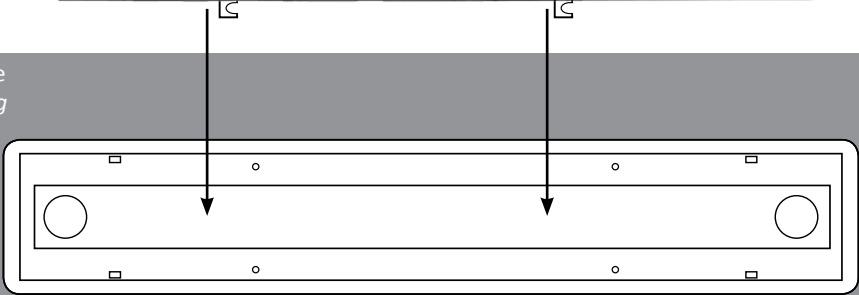
Seitenansicht / *side view*



Ansicht von unten / *view from ground*

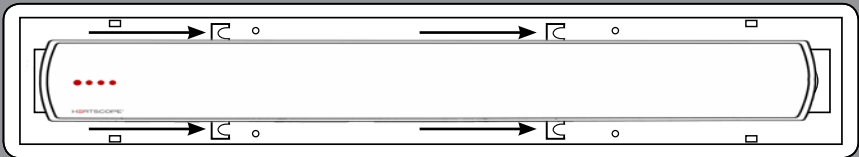


Decke
ceiling



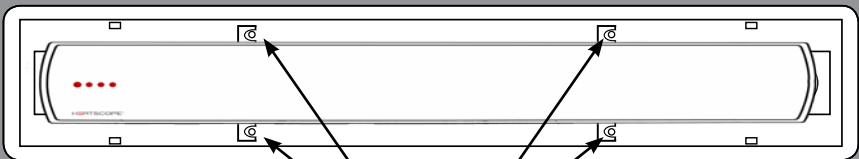
Ansicht von unten
view from ground

Decke
ceiling



Ansicht von unten
view from ground

Decke
ceiling



Schrauben VORSICHTIG festziehen
tighten screws CAREFULLY

Ansicht von unten
view from ground

11. Außerbetriebnahme / Entsorgung

Dieses Produkt wurde umweltschonend verpackt. Alle direkt oder über den Handel in Verkehr gebrachten Verpackungen sind nach §6 der Verpackungsverordnung zertifiziert. Somit können alle Verpackungen umweltgerecht im Sammelbehälter für Verpackungsmaterialien entsorgt werden. Dabei sind die jeweiligen gesetzlichen Vorschriften zu beachten. Nähere Informationen erhalten Sie gerne auf Anfrage.

Nach Ablauf seiner Funktionsfähigkeit ist das Gerät durch einen Fachmann nach den geltenden Vorschriften außer Betrieb zu nehmen und gegen Wiederinbetriebnahme zu sichern.

Das Gerät muss fachgerecht und umweltschonend entsorgt werden. Dabei sind die gesetzlichen Vorschriften zu beachten.



WEEE-Reg.-Nr.
DE 45650441



RoHS 
COMPLIANT 2002/95/EC

11. Removal from service / disposal

This product comes supplied in environmentally friendly packaging. All packaging that comes into circulation either directly or via the trade is certified in accordance with §6 of the German Packaging Directive. As a result, all packaging can be disposed of in an environmentally friendly manner in collection containers for packaging materials. The relevant legal regulations must be observed here. Further information is available from the manufacturer.

When the unit reaches the end of its life, it must be removed from service by a specialist in accordance with the relevant regulations and steps must be taken to ensure that it cannot be put into use again.

The unit must be disposed of professionally and in an environmentally friendly manner. The relevant legal regulations must be observed.



WEEE-Reg.-Nr.
DE 45650441



RoHS 
COMPLIANT 2002/95/EC

CONTACT PARTNERS IN YOUR REGION

GERMANY

MANUFACTURER

MHS Munich Home Systems GmbH
Kramergasse 32
D-82054 Sauerlach-Lochhofen

heatscope@moonich.de
www.heatscope.com

GERMANY

ELECTRICAL SUPPLY COMPANIES

ELKA-Hugo Krischke GmbH
Wettersteinstr. 12
D-82024 Taufkirchen
Tel.: +49 89 3090409-0
Fax: +49 89 3090409-50
info@elka-krischke.de
www.elka-krischke.de

GERMANY

ALL OTHER COMPANIES / CUSTOMERS

MOONICH GmbH
Kramergasse 32
D-82054 Sauerlach-Lochhofen
Tel.: +49 8104 647090
Fax: +49 8104 647099
heatscope@moonich.de
www.moonich.de

FRANCE

SARL HEATSCOPE FRANCE
ZI Les gresses
26290 Donzère FRANCE
Tel.: +33 9 64 12 50 95
Fax: +33 4 75 52 92 89
contact@heatscopefrance.fr

TURKEY

Uluslararasi Girisim Grubu
Adnan Saygun Cad. Lale Sok. 5/1
TR-34340 Ulus - Istanbul
Tel.: +90 212 2877760
info@uggrubu.com.tr
www.uggrubu.com.tr

SPAIN

Home Garden & Lifestyle Solutions S.L.
Av. Autopista del Saler 6-43
ES-46013 Valencia
Tel.: +34 652 810 402
info@masterkool.es
www.masterkool.es

USA, CANADA, NORTH AMERICA

GreenChance Inc. Culver City
11265 Washington Blvd.
USA CA90230
Tel.: 001-310-9295333-1001
Fax: 001-310-7335070
info@greenchance.net
www.greenchance.net

CZECH REPUBLIC

Able Electric, spol. s.r.o.
Ještědská 90/117a
CZ-46008 Liberec 8
Tel.: +420 485 130303
Fax: +420 485 130209
servis@bionaire.cz
www.bionaire.cz

SLOVAK REPUBLIC

KA-BE
Hričovská 205
SK-010 01 Žilina
Tel.: +421 41 7002121
Fax: +421 41 7233446
kabe@kabe.sk
www.kabe.sk

HONGKONG, ASIA

Design & Distribution Link Ltd.
75 King's Road
HK-North Point
Tel.: +852 2105 9468
Fax: +852 2838 8766
info@dndlink.com.hk
www.designlink.com.hk

ITALY

Ecoenergie srl
Via Roma 52/F
IT-35030 Cinto Euganeo (PD)
Tel.: +39 0429 700300
Fax: +39 0429 784513
info@ecoenergie.biz
www.ecoenergie.biz

GREECE

Archiflame
30 El. Venizelou St.
GR-172 35 Daphne / Athens
Tel.: +30 210 9716521
Fax: +30 210 9716521
info@archiflame.gr
www.archiflame.gr

NEW ZEALAND

Outdoor Concepts
77 The Strand / Parnell
NZ-1140 Auckland
Tel.: +64 9 3076770
Fax: +64 9 3774091
sales@outdoorconcepts.co.nz
www.outdoorconcepts.co.nz

COLOMBIA, SOUTH AMERICA

Importaciones y Distribuciones
Dieudonnes SAS
CO-Bogota
Diag 127A N. 7C-19
Tel.: +57 2156268
Edgarv@lamaisono-deltalight.com



MUNICH HOME SYSTEMS